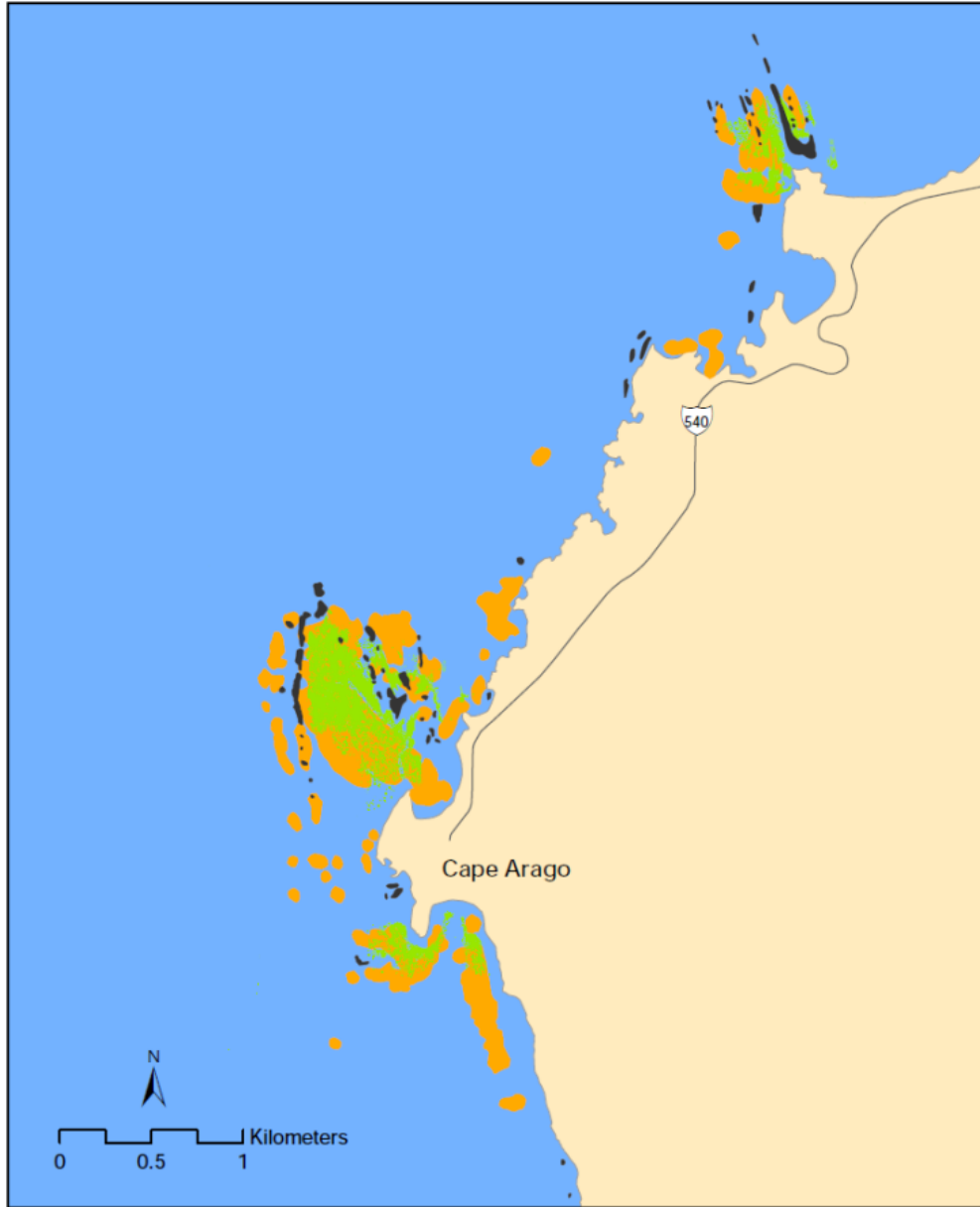


Appendix D Kelp canopy extent from ODFW's Kelp Canopy and Biomass Survey Report (2011)

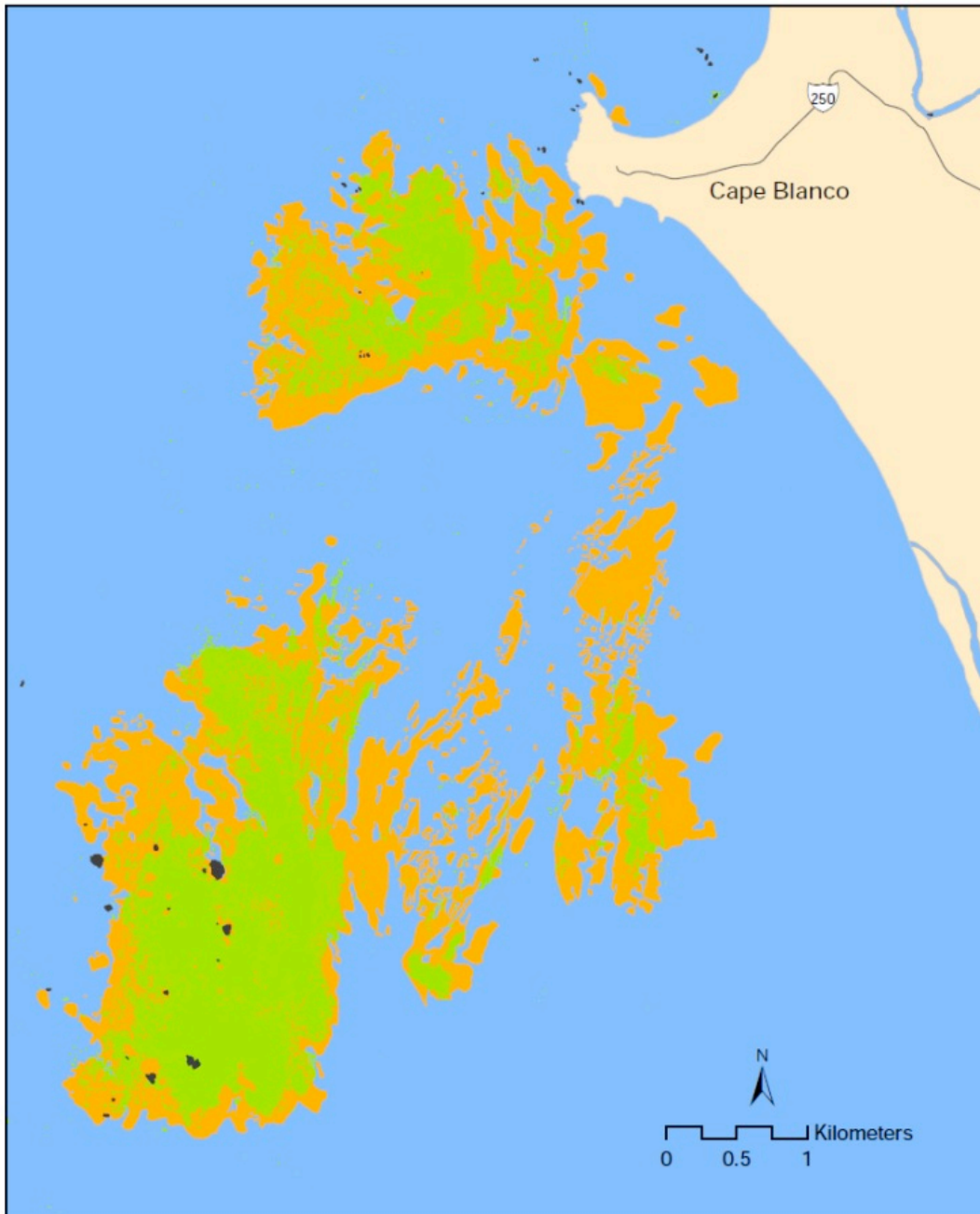
Figure S1. Cape Arago

This region was not included in the 1996 - 1999 surveys.



Comparison of maximum kelp canopy extent at Cape Arago from all kelp surveys in Oregon. A single coastwide survey in 1990 (orange polygons) is overlaid with the kelp canopy of this current survey (green polygons). The 1990 kelp beds were delineated from near-infrared photography using methods that do not differentiate beds at the resolution of DMSI methods, so bed density is not comparable between survey types in this image.

Figure S2. Blanco and Orford Reefs



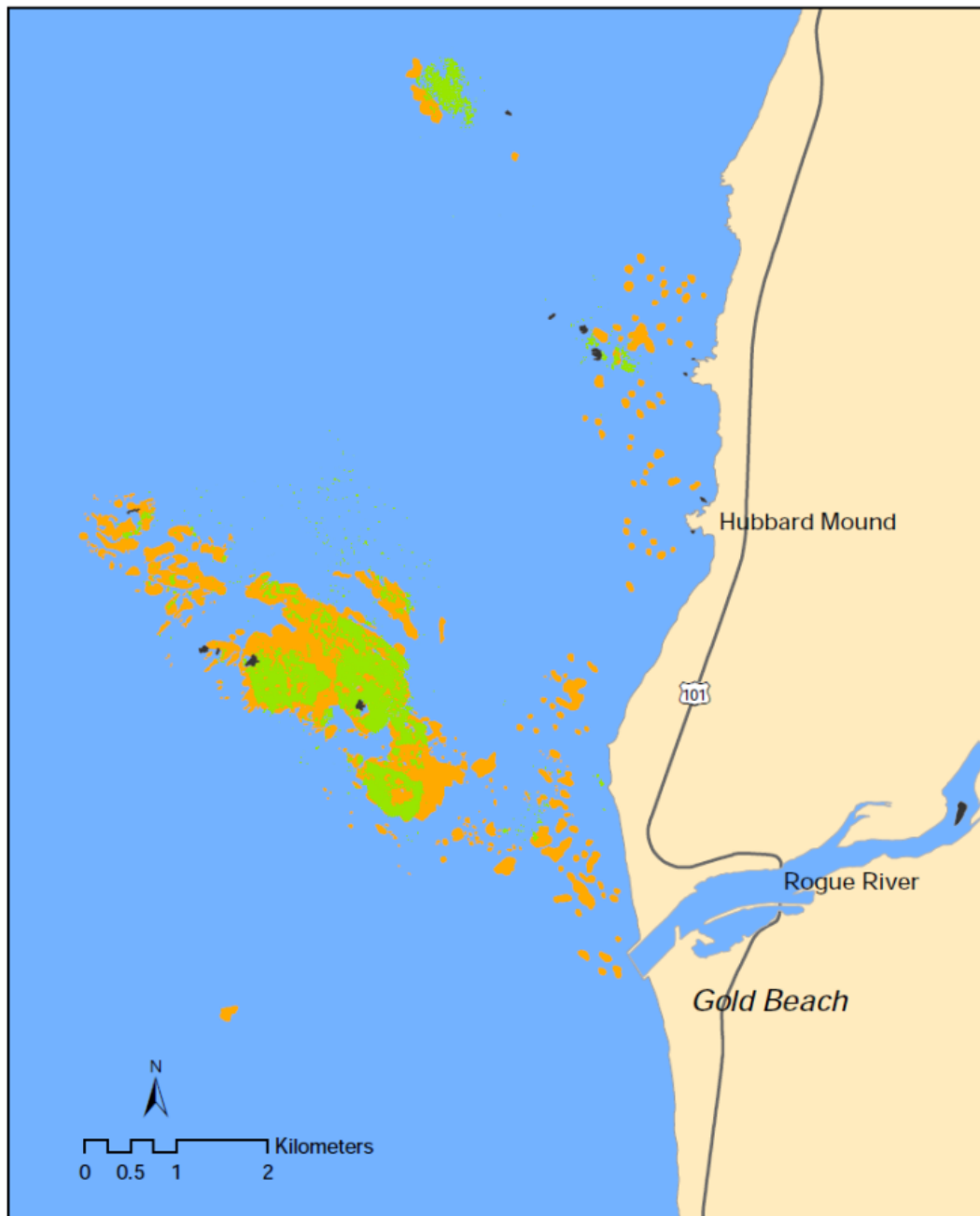
Comparison of maximum kelp canopy extent at Blanco and Orford reefs from all kelp surveys in Oregon. A single coastwide survey in 1990 is merged with 5 annual south-coast regional surveys from 1996-99 (orange polygons) and is overlaid with the kelp canopy of this current survey (green polygons). The 1990-99 kelp beds were delineated from near-infrared photography using methods that do not differentiate beds at the resolution of DMSI methods, so bed density is not comparable between survey types in this image.

Figure S3. Port Orford, Redfish Rocks and Humbug Mountain



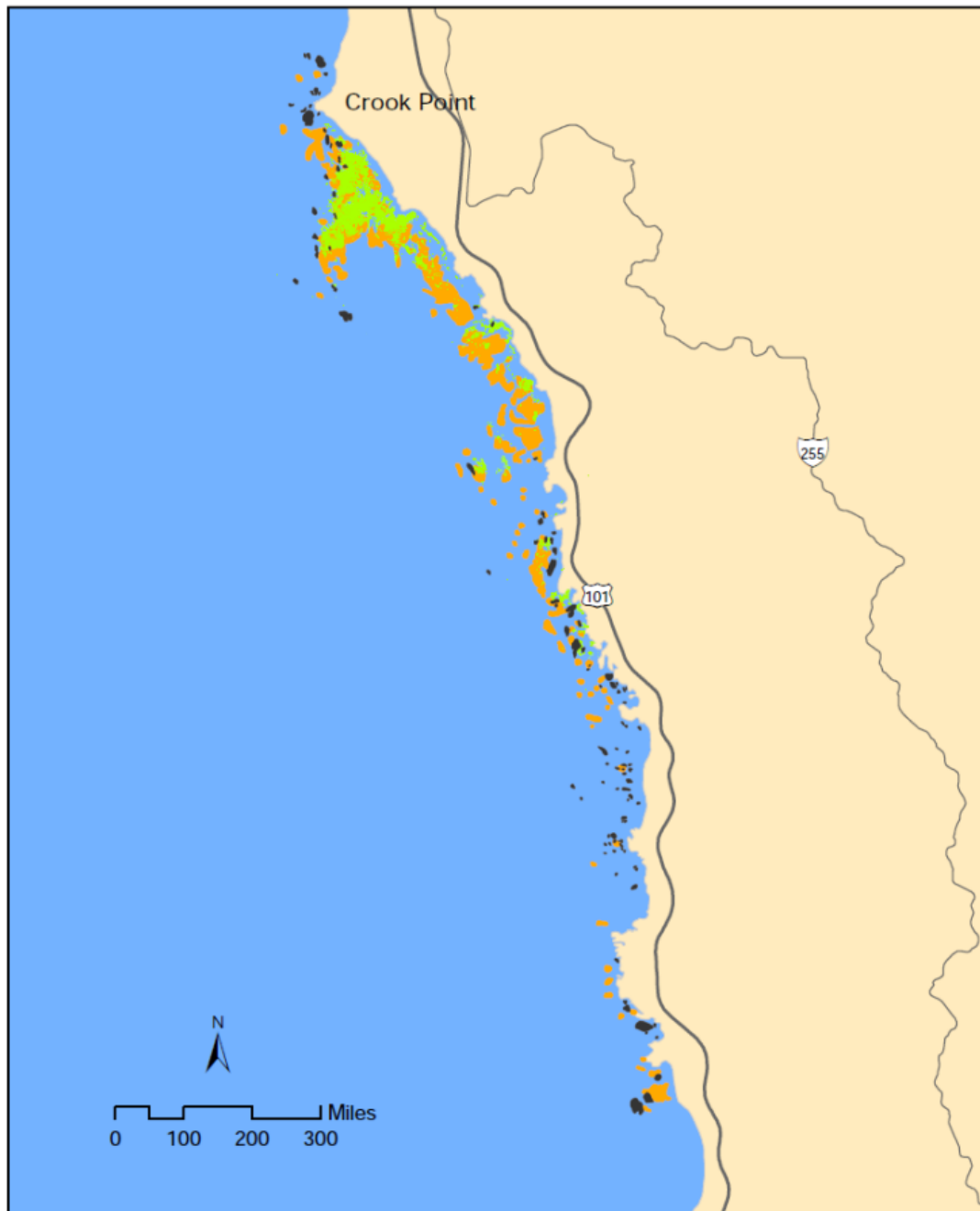
. Comparison of maximum kelp canopy extent at Redfish Rocks and Humbug Mountain reefs from all kelp surveys in Oregon. A single coastwide survey in 1990 is merged with 5 annual south-coast regional surveys from 1996-99 (orange polygons) and is overlaid with the kelp canopy of this current survey (green polygons). The 1990-99 kelp beds were delineated from near-infrared photography using methods that do not differentiate beds at the resolution of DMSI methods, so bed density is not comparable between survey types in this image.

Figure S4. Rogue River Reef



Comparison of maximum kelp canopy extent at Rogue Reef and a nearby shallow reef from all kelp surveys in Oregon. A single coastwide survey in 1990 is merged with 5 annual south-coast regional surveys from 1996-99 (orange polygons) and is overlaid with the kelp canopy of this current survey (green polygons). The 1990-99 kelp beds were delineated from near-infrared photography using methods that do not differentiate beds at the resolution of DMSI methods, so bed density is not comparable between survey types in this image.

Figure S5. Crook Point and the Mack Arch Complex
This region was not included in the 1996 - 1999 surveys.



Comparison of maximum kelp canopy extent at Mack Arch from all kelp surveys in Oregon. A single coastwide survey in 1990 (orange polygons) is overlaid with the kelp canopy of this current survey (green polygons). The 1990 kelp beds were delineated from near-infrared photography using methods that do not differentiate beds at the resolution of DMSI methods, so bed density is not comparable between survey types in this image.

Figure S6. Cape Ferrelo

This region was not included in the 1996 - 1999 surveys.



Comparison of maximum kelp canopy extent at Cape Ferrelo from all kelp surveys in Oregon. A single coastwide survey in 1990 (orange polygons) is overlaid with the kelp canopy of this current survey (green polygons). The 1990 kelp beds were delineated from near-infrared photography using methods that do not differentiate beds at the resolution of DMSI methods, so bed density is not comparable between survey types in this image.